



Lifetime Warranty

Manufactured By
Arturo Salice S.p.A.
Como, Italy

Only
Made in Italy
Since 1926

www.saliceamerica.com

General Description

Grade 2, soft close, concealed cabinet and furniture hinge.
Four pivot points with an opening angle of 110 degree.

Soft Closing, galvanized spring.
All steel construction.
Nickel plated. Corrosion resistant.

Self-lubricating.
Fully adjustable by mechanical means.
Compatible with all Salice series 200, mounting plates.

See additional cut sheets for self close or free swinging hinges.

Applications

Suitable for commercial and institutional case work, office furniture and residential cabinetry when a silent close function is desired.

Use where a 110 degree opening is desired.

Available for full overlay, partial overlay and inset applications.

Maximum door thickness: 15/16" (24mm) *
Minimum door thickness: 5/8" (16mm)
Hinge cup depth: 9/16" (13.5mm)

Certifications: ANSI/BHMA, ISO9001, ISO14001

ANSI/BHMA

A.156.9-944.2
Sections: 4.2 Hinge set test.
Sections: 4.3 Operating life cycle
Sections: 4.4 Closing and extension

www.buildershardware.com
www.ansi.org

ARCAT Specification

Section 06 41 20
Cabinet/Drawer Hardware

www.arcat.com

ISO9001

MANAGEMENT SYSTEM CERTIFICATE

ARTURO SALICE S.p.A. - Sede Legale e Operativa
Via Provinciale Novarese, 10 - 22040 Novarese (CO) - Italy

ISO 9001:2015

ISO14001

MANAGEMENT SYSTEM CERTIFICATE

ARTURO SALICE S.p.A. - Sede Legale e Operativa
Via Provinciale Novarese, 10 - 22040 Novarese (CO) - Italy

ISO 14001:2015

Environmental Responsibility

Arturo Salice S.p.A. continually takes steps to insure our activities result in a positive impact on the environment. All Salice products exceed all international standards for environmental responsibility in the manufacturing process. This includes full compliance with **ROHS** certification. www.rohsguide.com

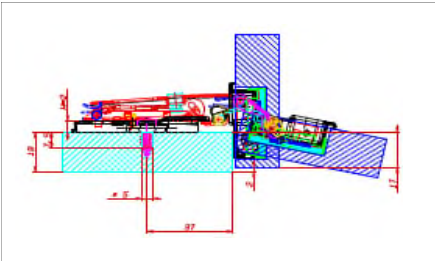
Buy American Act

Salice America meets all requirements to be in compliance with the Buy American Act. Title 41: 41 U.S.C. §§ 8301-8305.
www.fas.org/sgp/crs/misc/R43140.pdf

Consumer Product Safety Improvement Act 2008

All products manufactured by Arturo Salice S.p.A. are in compliance with consumer safety for lead content pursuant to CPSIA Title 1 Section 101.
www.cpsc.gov/Regulations

Movement

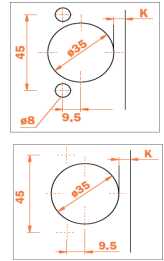


Number of Hinges Specification

- 2 hinges: Doors up to 36 inches high, up to 24 inches wide, 20 lbs or less.
- 3 hinges: Doors up to 60 inches high, up to 24 inches wide, 40 lbs or less.
- 4 hinges: Doors up to 84 inches high, up to 24 inches wide, 60 lbs or less.
- 5 hinges: Doors up to 96 inches high, up to 24 inches wide, 80 lbs or less.

* Please contact Salice America for doors beyond these size and weight specifications.

Boring Pattern



Item Codes

- C7_6AE9 110 Degree, Soft Close, Full Overlay, Nickel
- C7_6DE9 110 Degree, Soft Close, 1/2" Overlay, Nickel
- C7_6GE9 110 Degree, Soft Close, Half Overlay Nickel
- C7_6PE9 110 Degree, Soft Close, Inset, Nickel

"Space" _ Indicates fastening method. Fabricators choice.

Industry Affiliations

Salice America actively participates with the top industry associations to maintain the highest possible quality assurance standards for the industry. Some industry partners include:

National Kitchen & Bath Association
www.nkba.org

Kitchen Cabinet Manufacturers Association
www.kcma.org

North American Building Materials Distribution Association
www.nbmada.org/p/ca/vi/sid=28

Architectural Woodworking Institute
www.awinet.org

Woodwork Institute
www.woodworkinstitute.com

Cabinet Makers Association
www.cabinetmakers.org

* The maximum door thickness stated is based on the maximum door thickness possible while maintaining aesthetically pleasing, minimal reveals between 2 doors.