



Sales Bulletin
April 2020

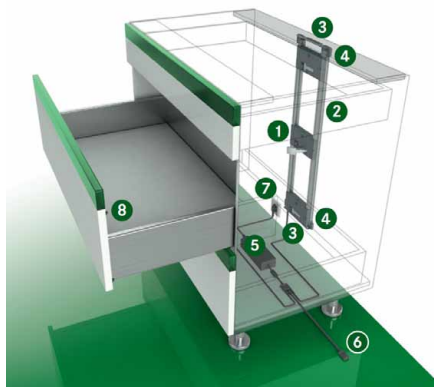
Sensomatic for DynaPro

Combine handle-free opening with the ever popular Soft-closing action. Just tap anywhere on the drawer front and the drawer opens automatically. The Sensomatic is an electro-mechanical opening system that works with the Dynapro slide system. One drive unit for cabinets widths up to 47-1/4" (1200mm). Ideal for accessories such as wire baskets, waste bins, or roll-out trays.

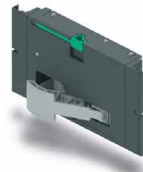


Scan here to see Installation Video or go to macpac1.com//videos.html#grass

Standard Cabinet with horizontal wooden stretcher



① **Opening Unit**
For DynaPro



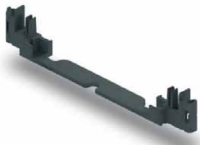
Code List/ea
F12-268 \$ 209.58

② **Frame Sides**
Including Frame Side Cable,
750mm (29-1/2")



Code List/ea
F12-285 \$ 152.62

③ **Frame Connector**



Code List/ea
F12-282 \$ 3.46

④ **Fixing Bracket**



Code List/ea
F12-270 \$ 6.04

⑤ **Power Supply Unit**



Code List/ea
F12-269 \$ 333.39

⑦ **Power Cord, 6'**



Code List/ea
F12-760 \$ 49.07

⑧ **Spring-loaded Front Bumper**

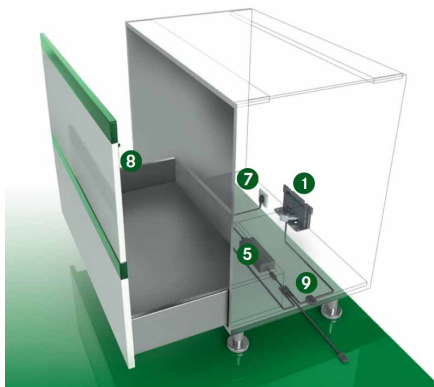


Code List/ea
F12-295 \$ 2.55

One power supply operates up to 30 opening units.

Front Gap: 3mm

Waste Bin Cabinet with bottom panel frame mounting



Sensomatic Kit

Includes:

- (1) Opening unit
- (1) Base Frame
- (1) Power Supply unit
- (1) Power Cord
- (4) Front bumpers

Code List/ea
F12-697 \$ 588.25



Due 5/6

⑨ **Four-way Adapter**



Code List/ea
F12-293 \$ 60.75