

Sales Bulletin Update
April 2017

New Sizes & Items
(pg 2,3 Connectors)



Zeta P2 for Biscuits and RTA fittings

New YouTube Link:

Micro Depth Adjustment
for Lamello Zeta P2

Zeta P2
101402S

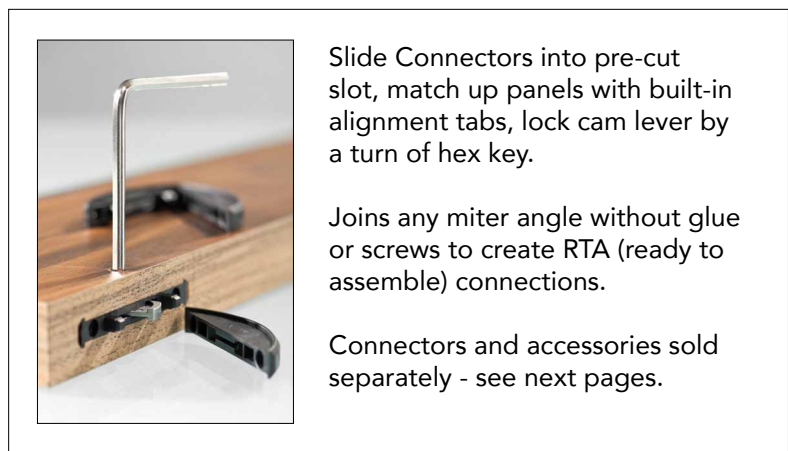
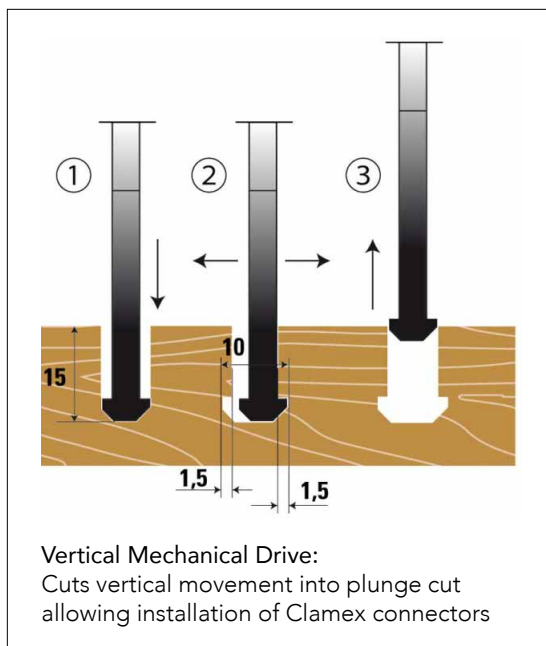


The Zeta P2 machine for the evolving P-System will save you time everyday! The P-System depth adjuster allows you to easily choose between five P-System depths. The cutter plunges into the preset depth, then follows a vertical movement up and down for the profile cut called the VMD Vertical Mechanical Drive, which can be simply switched off so that the Zeta P2 can be used as a standard biscuit joiner (Standard cutter is sold separately - #132000).

The vertical mechanical drive (VMD) is the core of the machine and the key to the Clamex P-14 and Clamex Medius connector system. Model 101402S comes with a carbide tipped profile groove cutter. Comes in a Systainer box.

- P-System Depths - Depth 14 is for Clamex P-14 and Tenso P-14, Depth 10 for Clamex P Medius
- Swivelling front stop and stop square are flush on both sides
- Large fence surfaces
- 800 watt motor with electronic control
- Rotating depth adjuster with 6 standard stops
- Base plate and fence is flush for side reference for fast positioning on edge of the work piece
- Pivoting trigger to switch off the VMD function to use as a standard biscuit joiner (please note that the standard cutter is sold separately)
- The quickest and most economical way to install knock down fittings

Code	Net
101402S	\$ 1650



See video at MacMurrayPacific.com/videos#lamello

See Micro Depth Adjustment for Lamello Zeta P2 video at MacMurrayPacific.com/videos#lamello2



Sales Bulletin Update
April 2017
New Sizes & Items

P2 System Connectors
Use with Zeta P2



Clamex P

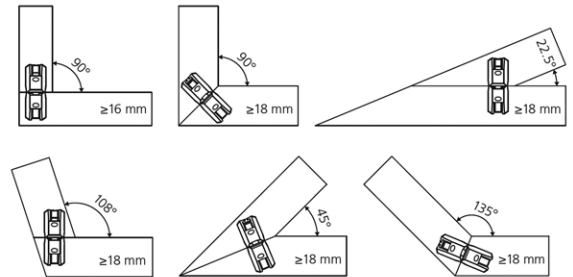
The Detachable, Eccentric Cam Connector slides into place--No Tools Required



- Fits into T-groove slot made with a Zeta P2 machine: Simply slide connectors in pre-cut slot, match up panels with built in alignment tabs, lock cam lever by a turn of a hex key.
- Joins any miter angle without glue or screws to create nearly invisible Ready To Assemble (RTA) connections.

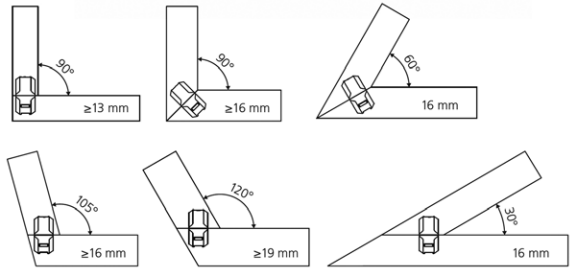
Clamex P-14 - For Panels from 16mm
66 x 28 x 9.7mm

Code	Box	Net/Bx
145334	80 pr	\$ 120
145346	300 pr	415
145356	1000 pr	1250



Clamex P-10 - For Panels from 13mm
52 x 19 x 9.7mm

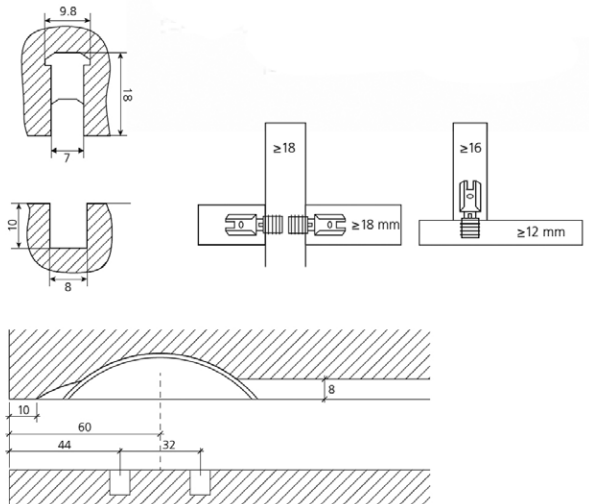
Code	Box	Net/Bx
145373	300 pr	\$ 415



Divario P-18

Self-clamping, invisible fitting for slide insertion. 65 x 16 x 9.7mm

- Completely invisible joint
- Joins and clamps during insertion for perfectly closed joints
- Narrow element for the use in shelves from 19mm
- No resistance while inserting until shortly before building the clamping force
- Insertion of shelves after transport for lower transport weight



Code	Box	Net/Bx
145550	80 pr	\$ 85
145560	300 pr	250

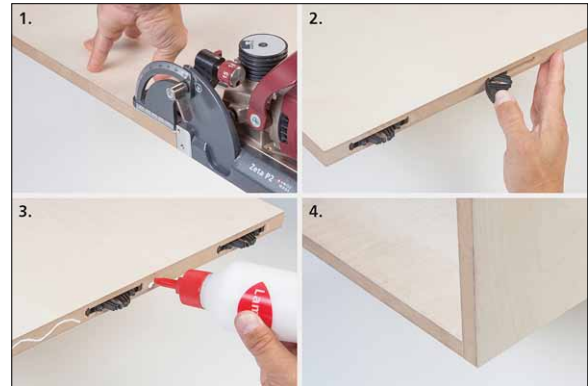


P2 System Connectors
continued

Tenso P-14

Glue Faster: Invisible Self-Clamping Glue Aid

66 x 28 x 9.7mm



The Tenso P-14 is a self-clamping fitting with three functions: alignment, clamping and connecting. The high clamping force allows work pieces to be glued without clamps or pressure. Anchors the work piece in just seconds, without tools.

Minimal installation depth of 14mm and can be used in wood materials from 15mm. Zeta P2 depth setting 14.

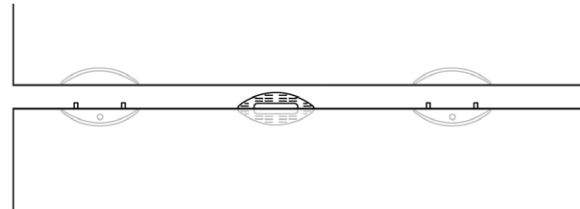
Code	Box	Net/Bx
145415	80 pr	\$ 80
145425	300 pr	240



Bisco P-15/14

Alignment aid for Clamex & Tenso P-14.

7mm thickness



Bisco P is an alignment element that is part of the Clamex P system. It is easily installed using the Zeta P2 or CNC as it fits easily into the P-system groove without changing the cutter. Bisco P-15/14 is 7mm thick, made of thick plastic and used in combination with Clamex P-14. The element is not only used for alignment of panels but can be used for glueing, and increasing shear strength.

Code	Box	Net/Bx
145301	80 ea	\$ 35
145302	300 ea	85

Accessories for Zeta P2 System



Clamex P Carbide Cutter. Replacement T-Groove cutter for Zeta P2. 100 x 7 x 22mm.

#132141

Net \$ 140.00



This 6 Tooth Carbide Cutter is the standard blade for the Zeta P2 - when you want to use it as a cutter for standard biscuits.

#132000

Net \$ 110.00



4mm Hex Key for all Clamex connectors.

#271945 Net \$ 1.25