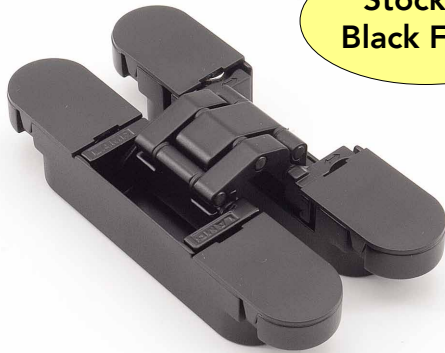




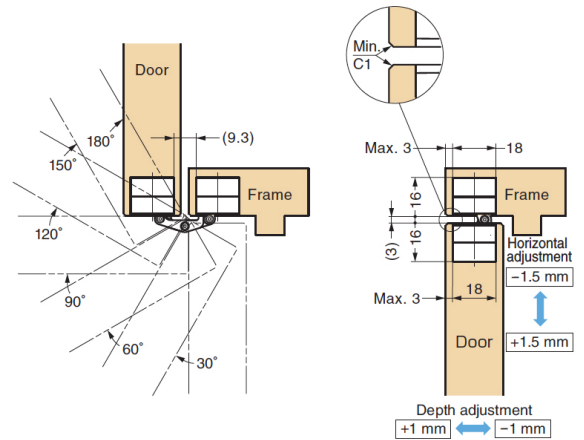
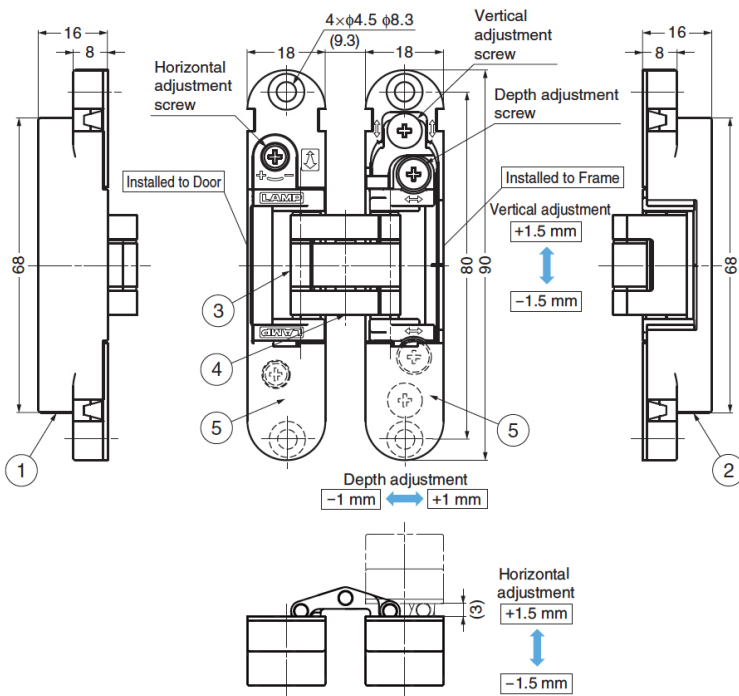
**3-Way Adjustable Concealed Hinges**  
HES3D-90: for 23mm Thick Doors (7/8") min.

Sales Bulletin  
**Update**  
August 2020

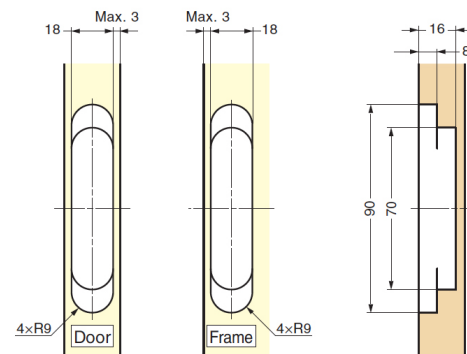


**Stocking  
Black Finish**

- 3-Way Adjustment:  
Horizontal: -1.5 ~ +1.5mm  
Vertical: -1.5 ~ +1.5mm  
Depth: -1 ~ +1mm
- Max Door Weight:  
26 lbs/ 2 hinges  
35 lbs/ 3 hinges
- Opening Angle: 180°
- Easy Installation
- Cover hides all screw heads for clean appearance
- Min Door Thickness: 23mm (7/8")
- Now stocking black finish - other finishes avail. special order



No.	Part Name	Material	Finish	
			DC	DN
①	Body	Zinc Alloy (ZDC)	Satin Chrome	Satin Nickel
②	Base Frame	Zinc Alloy (ZDC)	Satin Chrome	Satin Nickel
③	Arm	Zinc Alloy (ZDC)	Satin Chrome	Satin Nickel
④	Shaft	Stainless Steel	-	-
⑤	Cover	ABS	Satin Chrome	Satin Nickel



Code  
HES3D-90BL

Finish  
Black

List/ea  
\$ 75